

Quick Delivery DELTA Series Industrial Reverse Osmosis Systems

30 to 100 Gallons Per Minute



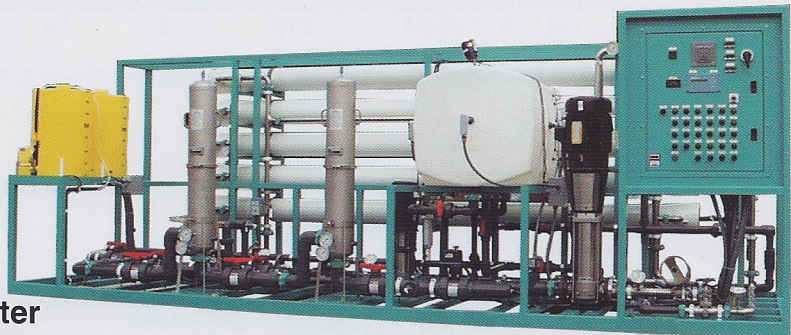
MODEL DELTA-30HF
43,200 GPD of High Purity Water



MODEL DELTA-50HF
72,000 GPD of High Purity Water



MODEL DELTA-60HF
86,400 GPD of High Purity Water



MODEL DELTA-85HF
115,200 GPD of High Purity Water

Manufactured by:

CRANE

CRANE ENVIRONMENTAL
PURE *Water* MADE SIMPLE™



THE ORIGINAL NAMES IN WATER TREATMENT

DELTA Series Industrial Reverse Osmosis Systems 30 to 100 GPM

STANDARD FEATURES:

- 2-Coat Epoxy Painted Carbon Steel Frame
- Grundfos CR-Series 304 SS Pump w/TEFC Motor
- Membranes: 8"x40", TFC Brackish Water
- FRP Side-ported, 450 psi Pressure Vessels
- Low Pressure Switch
- High Pressure Switch
- Voltage: 460V/60Hz/3Ph or 380V/50Hz/3Ph
- Prefilter Housing: 304SS w/ 5 micron cartridges
- Pressure Gauges: 2.5" Dia., 316SS, Pre & Post-filter Pump Discharge, Interstage, Concentrate & Permeate
- Automatic Inlet Feedwater Valve
- 316SS High Pressure Valves (Concentrate, Pump Throttle)
- Flow Meters: Concentrate & Permeate (Digital)
- Low Pressure Piping: Sch80 PVC
- High Pressure Piping: 316SS
- PLC Controller - PLC Direct

OPTIONAL FEATURES:

- Anti-Scalant Dosing System
- De-Chlorination Dosing System with Static Mixer
- Acid Dosing System
- pH Elevation Dosing System
- Chlorination Dosing System
- pH Monitor/Controller
- ORP Monitor/Controller
- Conductivity Monitor
- Upgrade Pump from 304SS to 316SS
- "Cold Water" Membranes
- Recycle Package (Valve, Piping & Flow Meter)
- Automatic Fast Flush
- Integrated Cleaning Station, CIP
- Turbidity Monitor/Controller
- Nanofiltration membranes are available

MODEL DELTA-50HF



SYSTEM SPECIFICATIONS:

Model	Production*			Maximum 3rd Year Operating Pressure (psi)	Inlet Size	No. of 8"x40" Elements	Element Diameter	Designed Recovery (without recycle)	MOTOR HP (3 phase):	
	GPM	GPD	M ³ /D						60Hz 230/460V	50Hz 380/415V
DELTA-30HF	30	43,200	163.51	195	2"	8	8"	60%	10	15
DELTA-40HF	40	57,600	218.06	190	2"	10	8"	55%	15	15
DELTA-50HF	50	72,000	272.52	200	2"	12	8"	60%	20	20
DELTA-60HF	60	86,400	327.00	210	2"	14	8"	70%	20	20
DELTA-70HF	70	100,800	381.33	220	2"	16	8"	75%	20	25
DELTA-85HF	85	122,400	463.28	210	2.5"	20	8"	75%	25	25
DELTA-100HF	100	144,000	545.00	210	2.5"	24	8"	75%	25	25

*Based on feed water with TDS of 1500 ppm and temperature of 25°C (77°F)

WEIGHTS & DIMENSIONS: (Optional Features may increase dimensions)

Model	Approximate Shipping Dimensions				Approximate Unit Dimensions			
	Length (in/cm)	Width (in/cm)	Height (in/cm)	Weight (lbs/kg)	Length (in/cm)	Width (in/cm)	Height (in/cm)	Weight (lbs/kg)
DELTA-30HF	232/600	58/150	78/200	3050/1380	216/550	48/120	66/170	2650/1200
DELTA-40HF	232/600	58/150	78/200	3050/1380	216/550	48/120	66/170	2650/1200
DELTA-50HF	232/600	58/150	78/200	3600/1630	216/550	48/120	66/170	3200/1450
DELTA-60HF	232/600	58/150	78/200	3850/1750	216/550	48/120	66/170	3450/1570
DELTA-70HF	232/600	70/178	78/200	4620/2100	216/550	62/160	66/170	4170/1900
DELTA-85HF	232/600	70/178	78/200	5240/2380	216/550	62/160	66/170	4790/2170
DELTA-100HF	232/600	70/178	78/200	6760/3070	216/550	62/160	66/170	6310/2860