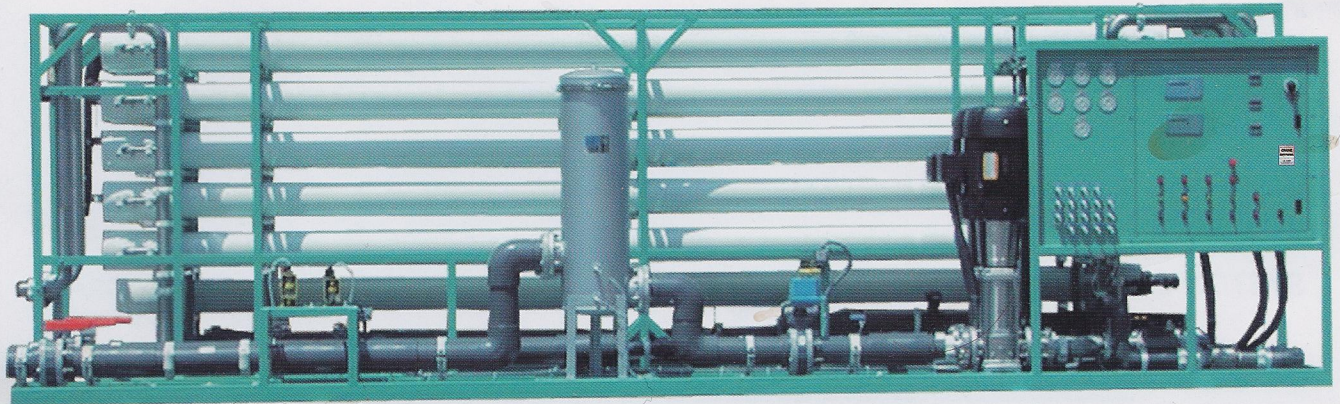


DELTA Series Systems

Industrial Reverse Osmosis Systems

275 to 400 Gallons Per Minute



MODEL - DELTA-400

576,000 GPD of High Purity Water

Manufactured by:

CRANE

CRANE ENVIRONMENTAL
PURE *Water* MADE SIMPLE™



THE ORIGINAL NAMES IN WATER TREATMENT

DELTA Series Industrial Reverse Osmosis Systems 275 to 400 GPM

STANDARD FEATURES:

- 2-Coat Epoxy Painted Carbon Steel Frame
- Grundfos CRN-Series 316 SS Pump w/TEFC Motor
- Membranes: 8"x 40", TFC Brackish Water
- FRP Side-Ported, 450 psi Pressure Vessels
- Low Pressure Switch
- High Pressure Switch
- Voltage: 460V/60HZ/3-Phase
- Pre-filter Housing: 304SS w/ 5 micron cartridges
- Pressure Gauges: 4" Dia., 316SS, Pre & Post-filter, Pump discharge, Interstage, concentrate & permeate
- Automatic Inlet Feed water Valve
- 316SS High Pressure Valves (Concentrate, Pump Throttle)
- Flow Meters: Concentrate & Permeate (Digital)
- Low Pressure Piping: Sch80 PVC
- High Pressure Piping: 316SS
- PLC

OPTIONAL FEATURES:

- Anti-Scalant dosing system
- De-Chlorination dosing system
- Acid Dosing System
- pH Elevation dosing system
- Chlorination dosing system
- pH monitor/controller
- ORP monitor/controller
- Conductivity Monitor
- 60 Hz motor with 316SS Pump
- "Cold Water" Membranes
- Recycle Package (Valve, Piping & Flow Meter)
- Automatic Fast Flush
- Integrated Cleaning Station - CIP
- Turbidity Monitor/Controller
- Nanofiltration membranes are available

SYSTEM SPECIFICATIONS:

Model	Production*		M ³ /D	3rd Year Operating Pressure (psi)	Inlet Size	No. of 8"x40" Elements	Designed Recovery (without recycle)	MOTOR HP (3 phase):	
	GPM	GPD						60Hz 230/460V	50Hz 380/415V
DELTA-275HF	275	396,000	1560	220	6"	66	75%	80	80
DELTA-300HF	300	432,000	1635	220	6"	72	75%	80	80
DELTA-325HF	325	468,000	1770	220	6"	78	75%	80	80
DELTA-350HF	350	504,000	1907	220	6"	84	75%	80	80
DELTA-375HF	375	540,000	2043	220	6"	90	75%	100	100
DELTA-400HF	400	576,000	2180	220	6"	96	75%	100	100

*Based on feed water with TDS of 1500 ppm and temperature of 25°C (77°F)

WEIGHTS & DIMENSIONS: (Optional Features may increase dimensions)

Model	Approximate Shipping Dimensions				Approximate Unit Dimensions				
	Length (in/cm)	Width (in/cm)	Height (in/cm)	Weight (lbs/kg)	Length (in/cm)	Width (in/cm)	Height (in/cm)	Weight (lbs/kg)	
DELTA-275HF	310/787	118/300	102/260	26000/12375	300/762	108/275	90/229	25000/11365	
DELTA-300HF	310/787	118/300	102/260	26800/12750	300/762	108/275	90/229	25800/11730	
DELTA-325HF	310/787	118/300	102/260	27600/13100	300/762	108/275	90/229	26600/12090	
DELTA-350HF	310/787	118/300	102/260	28400/13500	300/762	108/275	90/229	27400/12455	
DELTA-375HF	310/787	118/300	102/260	29200/13850	300/762	108/275	90/229	28200/12820	
DELTA-400HF	310/787	118/300	102/260	30000/14200	300/762	108/275	90/229	29000/13185	