

EPRO Series Systems ***Industrial Reverse Osmosis Systems***

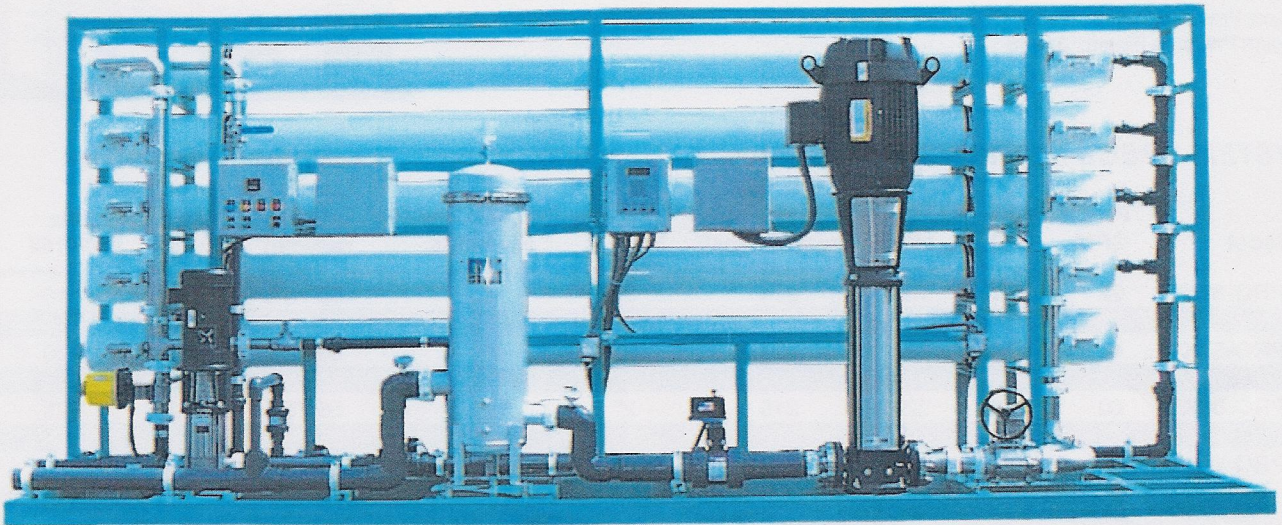
31,000 to 144,000 Gallons Per Day

OPTIONAL
• 30V/60HZ
• Anti-Scale
• Chlorinator
• De-Chlorinator
• Acid Dosing
• UV
• Softener

MODEL EPRO-144K

144,000 GPD of High Purity Water

*Shown with options



Manufactured by:

CRANE

CRANE ENVIRONMENTAL
PURE *Water* MADE SIMPLE™



THE ORIGINAL NAMES IN WATER TREATMENT

EPRO Series Industrial Reverse Osmosis Systems 31K to 144K GPD

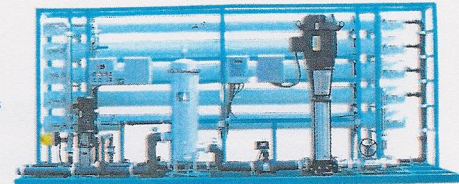
STANDARD FEATURES:

- 2-Coat Epoxy Painted Carbon Steel Frame
- Grundfos CR-Series 304 SS Pump w/TEFC Motor
- Membranes: 8"x40", TFC Brackish Water
- FRP Side-ported, 300 psi Pressure Vessels
- Low Pressure Switch
- Voltage: 460V/60Hz/3 Phase
- Prefilter Housing: 316SS w/ 5 micron cartridges
- Pressure Gauges: 2.5" Dia., 316SS, Pre & Post-filter, Pump Discharge, Concentrate, Permeate
- Automatic Inlet Feedwater Valve
- 316SS High Pressure Valves (Concentrate, Recycle)
- Flow Meters: Concentrate & Permeate (Digital)
- Programmable Electronic Control Box
- Automatic Fast Flush
- TDS Monitor
- Concentrate Recycle Loop
- Sample Valves
- Cleaning Ports
- Low Pressure Piping: Sch80 PVC
- High Pressure Piping: 316SS

OPTIONAL FEATURES:

- 380V/50Hz
- Anti-Scalant Dosing System
- Chlorination Dosing System
- De-Chlorination Dosing System
- Acid Dosing System
- pH Elevation Dosing System
- pH Monitor/Controller
- ORP Monitor/Controller
- Upgrade Pump from 304SS to 316SS
- "Cold Water" Membranes
- Recycle Flow Meter
- Integrated Cleaning Station, with tank off the skid
- Nanofiltration membranes are available

**MODEL
EPRO-144K**
*Shown with options



SYSTEM SPECIFICATIONS:

Model	Production*		M ³ /D	Maximum 3rd Year Operating Pressure (psi)	Inlet Size	No. of 8"x40" Elements	Designed Recovery (without recycle)	MOTOR HP (3 phase):	
	GPM	GPD						60Hz 230/460V	50Hz 380/415V
EPRO-31K	22	31,680	120	214	2"	4	55-75%	10	10
EPRO-43K	30	43,200	164	208	2"	6	55-75%	15	15
EPRO-57K	40	57,600	218	224	2"	8	65-75%	20	20
EPRO-72K	50	72,000	273	204	2"	10	55-75%	20	20
EPRO-86K	60	86,400	327	215	2"	12	65-75%	20	25
EPRO-108K	75	108,000	409	212	3"	16	65-75%	25	25
EPRO-144K	100	144,000	545	214	3"	20	65-75%	25	30

*Based on feed water with TDS of 1500 ppm and temperature of 25°C (77°F)

WEIGHTS & DIMENSIONS: (Optional Features may increase dimensions)

Model	Approximate Shipping Dimensions				Approximate Unit Dimensions			
	Length (in/cm)	Width (in/cm)	Height (in/cm)	Weight (lbs/kg)	Length (in/cm)	Width (in/cm)	Height (in/cm)	Weight (lbs/kg)
EPRO-31K	208/528	62/158	96/244	2250/1013	192/488	54/137	60/152	2300/1035
EPRO-43K	208/528	62/158	96/244	2600/1170	192/488	54/137	60/152	2350/1058
EPRO-57K	208/528	62/158	96/244	3200/1440	192/488	54/137	60/152	2900/1305
EPRO-72K	208/528	62/158	96/244	3450/1553	192/488	54/137	60/152	3100/1395
EPRO-86K	208/528	62/158	96/244	4150/1868	192/488	54/137	60/152	3800/1710
EPRO-108K	208/528	62/158	96/244	4700/2115	192/488	54/137	84/214	4300/1935
EPRO-144K	208/528	62/158	96/244	5900/2655	192/488	54/137	84/214	5500/2493